

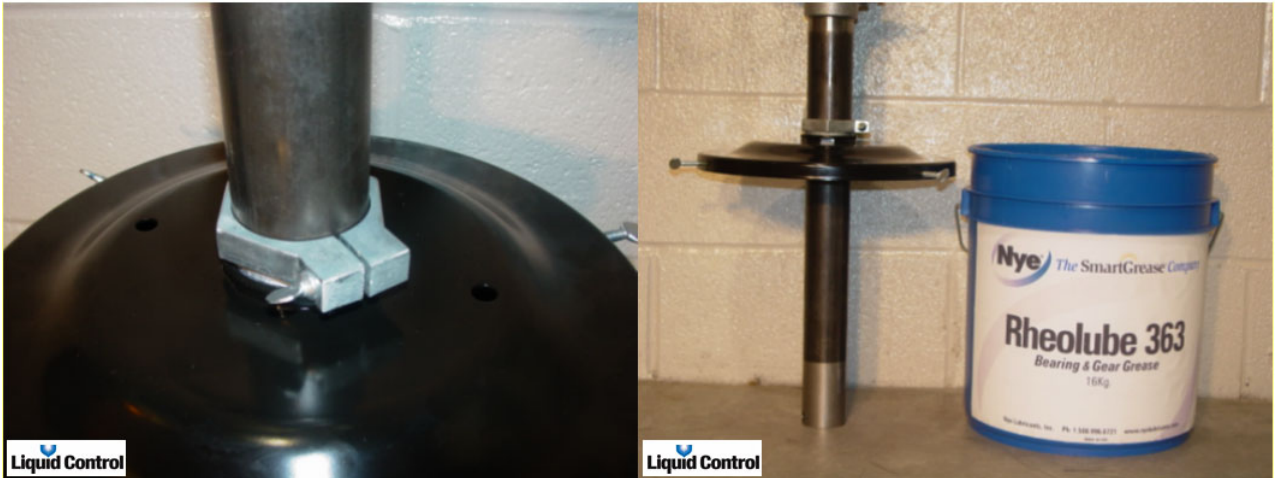
Liquid Control



Changing a Grease Pail on a Stub Pump with Follower Plate



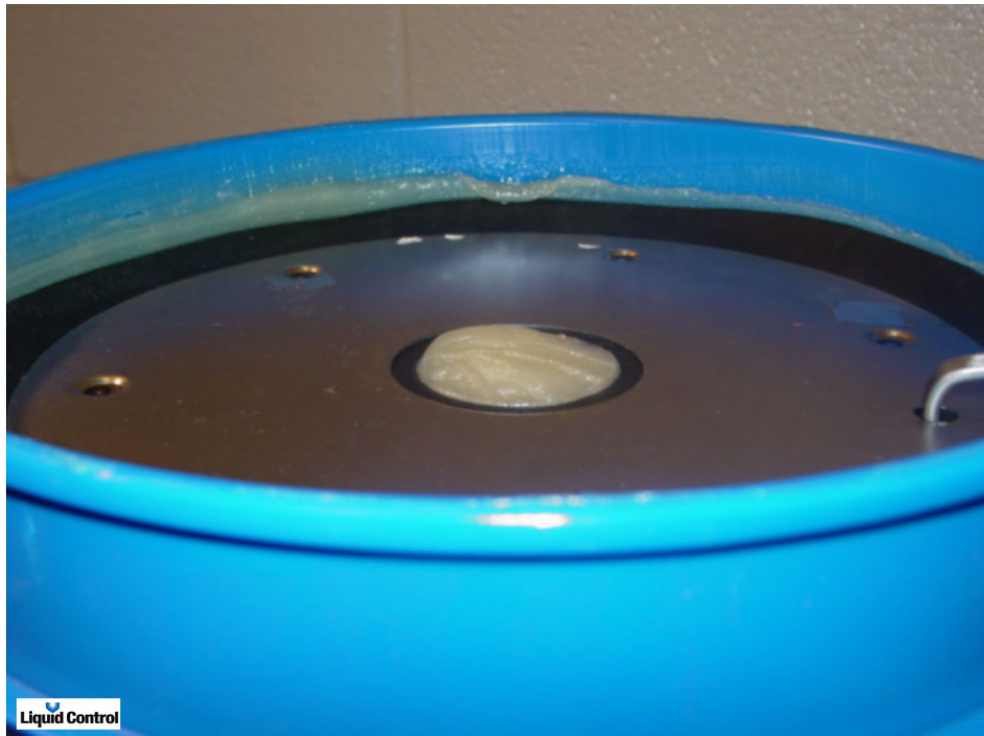
Slide the bracket on the transfer pump so the upper flange touches the top of the pail.



Screw pail cover onto the adjustment bracket. This will keep the bottom of the pump above the bottom of the grease pail when the pump is installed.



Using a plastic squeegee, move the grease from the center of the pail and up the side of the drum. This allows the air to be in the center of the pail for easier priming.



Install follower plate, pressing down so that the air can escape from the center of the hole. When the grease begins to rise through the hole at the center of the follower plate, the air is purged.



Install transfer pump and pail cover. Run the transfer pump as required until all air is purged.